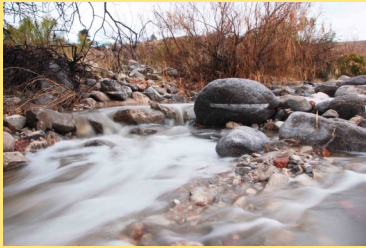




Wakeem/Teschner Nature Preserve at Resler Canyon

Special Places ~ Wide Open Spaces



Hours of Operation
Daylight hours

Preserve Rules

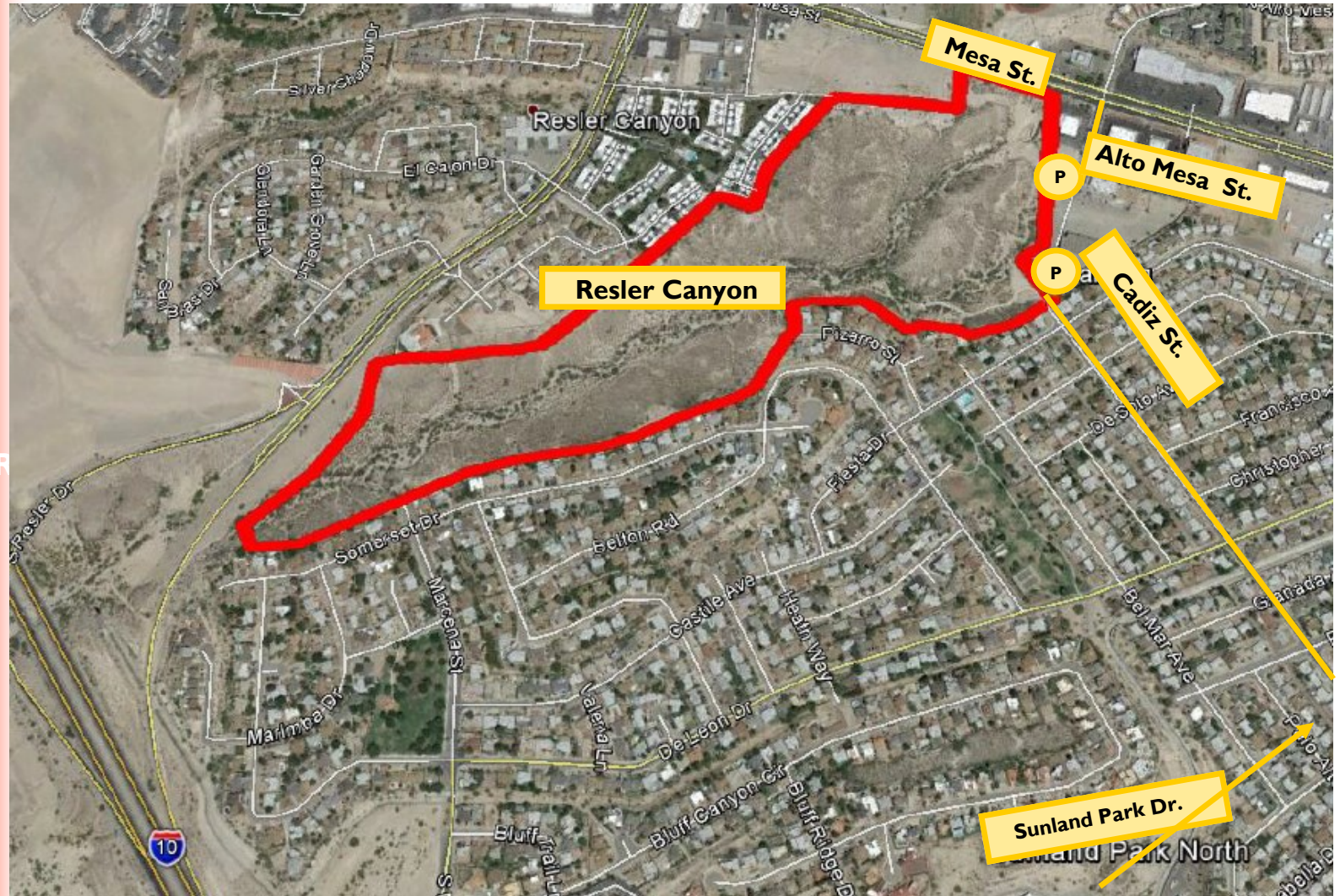
Wakeem/Teschner Nature Preserve at Resler Canyon is owned and managed by The Frontera Land Alliance.

"Take only pictures, leave only footprints"

- No hunting
- No dumping
- No camping
- No vehicles
- No bicycles
- No plant collecting

Office: 1201 N. Mesa St.
El Paso, Texas 79902

Phone: 915-351-8352
Janae@FronteraLandAlliance.org



Directions to Resler Canyon:

Turn onto Sunland Park Drive, go East from I10. Turn left off of Sunland Park Drive onto Cadiz St. Drive until Cadiz St. dead ends at Resler entrance.

Birds: Golden Eagle, Turkey Vulture, Gambel's Quail, Mourning Dove, White-winged Dove, Greater Roadrunner, Great Horned Owl, Black-chinned Hummingbird, Western Kingbird, Verdin, Cactus Wren, Northern Mockingbird, Curve-billed Thrasher, Great-tailed Grackle, House Finch, etc.

Animals: Black-tailed Jackrabbit, Desert Cottontail, Coyote, Mule Deer, Texas Horned Lizard, Collared Lizard, Checkered Whiptail, etc.

Native Plants: Littleleaf sumac, Silverleaf bahia, Desert marigold, Desert willow, Mountain peppergrass, BSi-colored mustadm, Spectaclepod Prickly pear cactus, Barrel cactus, Viscid acacia, Honey mesquite, Ocotillo, Scorpionweed, Ratany, Stinging cevallia, Blazingstar, Sacred datura, Creosote bush, Lechuguilla, Soap tree yucca, Torrey yucca, Mormon tea, Fluff grass, etc.